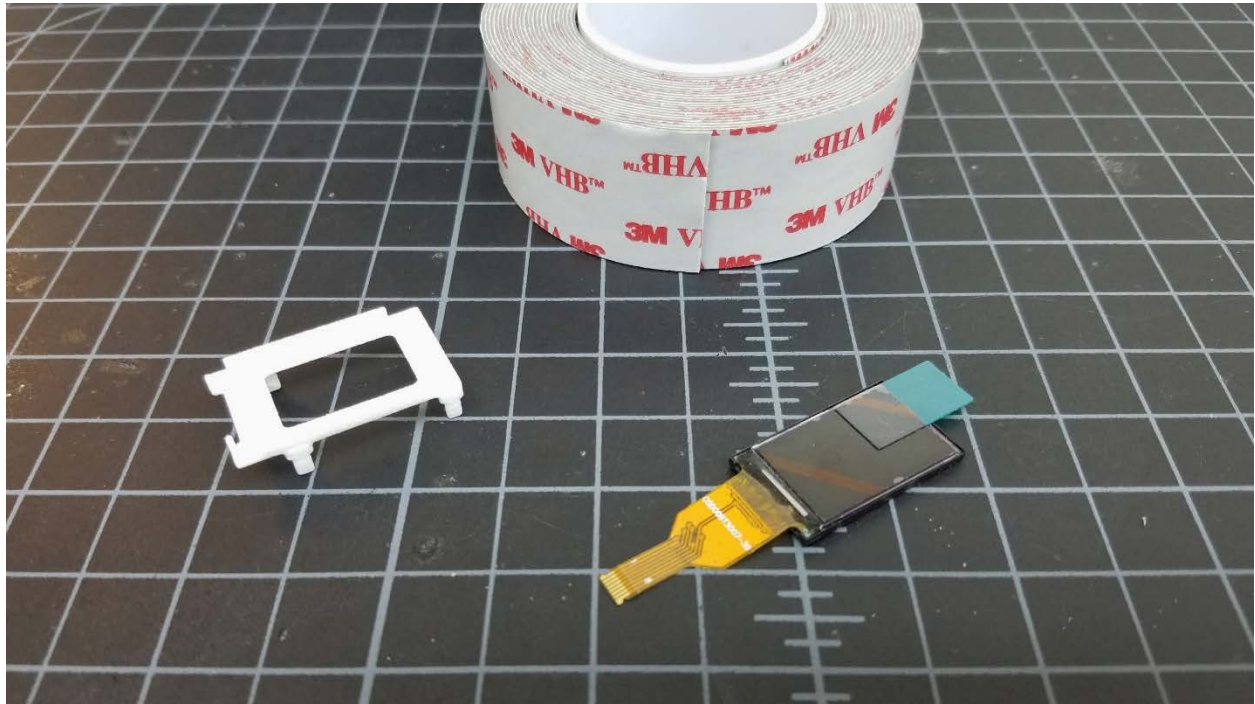


Color Screen Holder Assembly

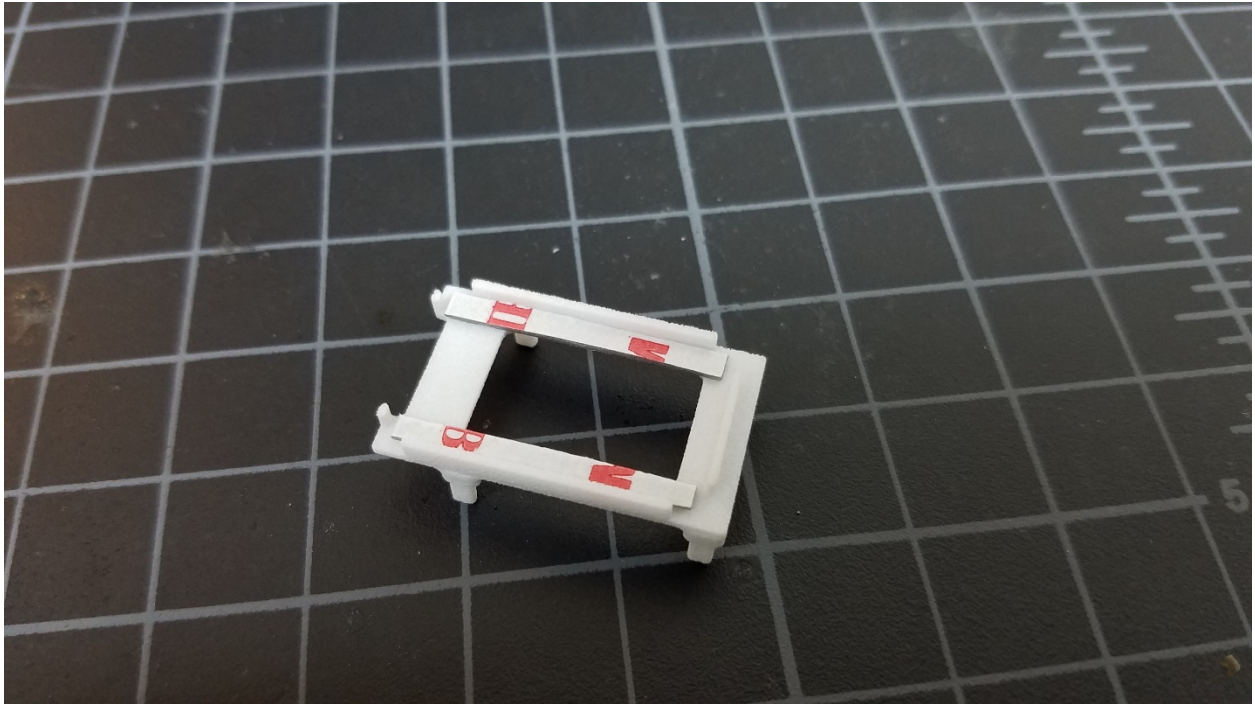
The screen holder allows the screen to be securely mounted and positioned in relation to the board. Use of the screen holder is not required but is recommended to make device assembly easier by combining the board and screen into a single assembly. The main advantage is eliminating screen related issues by keeping the ribbon cable in a fixed position after assembly.

The 3D model provided has been designed to print well on Shapeways using their method of 3D printing. Other 3D printing or manufacturing processes (such as injection molding) may require slight adjustments to the model so always test first before manufacturing a large run.

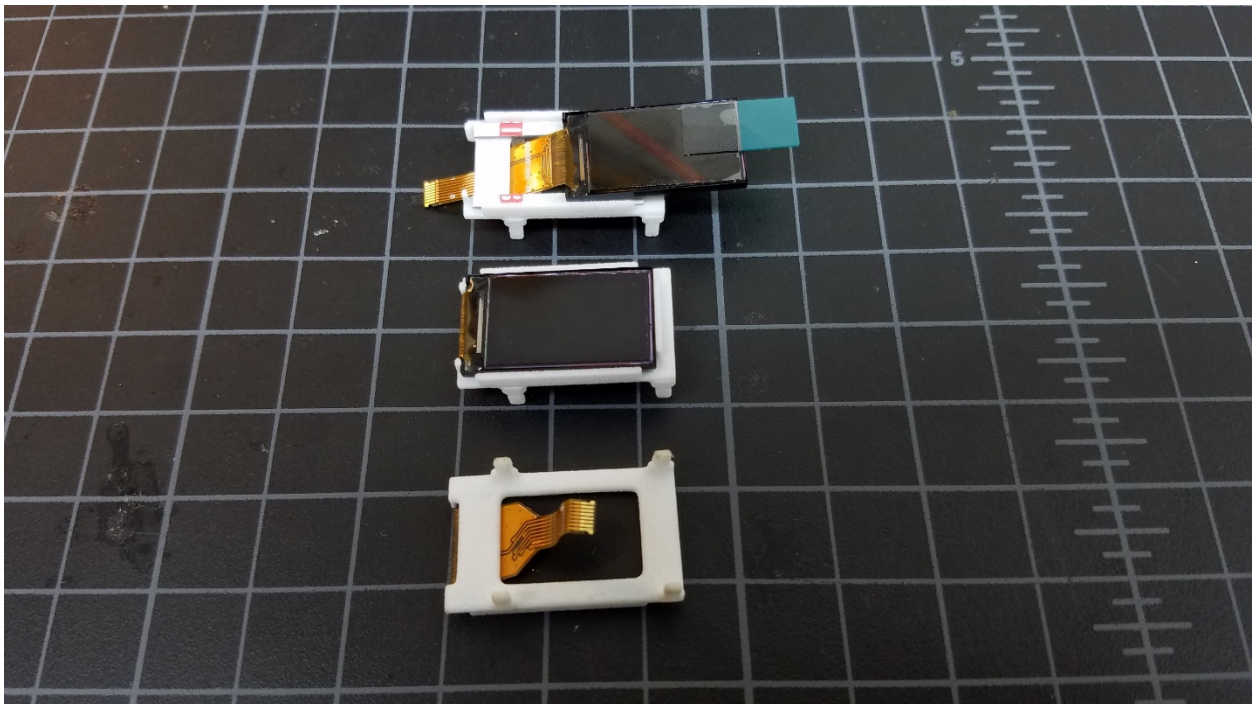
Use of 3M VHB tape is recommended to secure the screen to the holder. 1" wide x 0.025" thick is used in this example.



Two small strips just wide enough to not overhang into the middle of screen holder should be cut and placed as shown below.



Once the strips are in place the screen cable is passed through the opening in the holder and the screen is pushed all the way up against the stops on the cable side of the screen holder. When correct installed the screen should sit down inside the retaining edges of the screen holder.



Once the screen is installed in the holder the screen can be installed onto the board. The four notches along the side of the board are designed to accommodate the screen holder.

